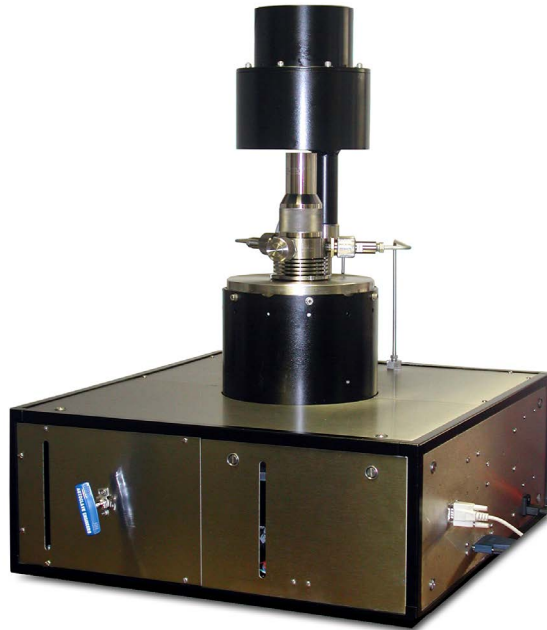




Dependable Products From People You Trust



OFITE HTHP Viscometer

Part No. 130-77

Instruction Manual

Updated 3/22/2023

Ver. 10

OFI Testing Equipment, Inc.

11302 Steeplecrest Dr. · Houston, Texas · 77065 · U.S.A.
Tele: 832.320.7300 · Fax: 713.880.9886 · www.ofite.com

Table of Contents

Intro	2
Components	3
Specifications	5
Setup	6
<i>Computer</i>	6
<i>Viscometer</i>	7
Control Panel	8
Operation	9
Software Start	14
Calibration	18
<i>Fluid Manager</i>	22
Software	23
<i>Options</i>	23
<i>Save Rate Settings</i>	26
<i>Test Builder</i>	27
<i>Select Analysis Outputs</i>	30
<i>Saved Test Data</i>	31
<i>Calibration History</i>	33
<i>Import/Export</i>	34
<i>Starting a Test</i>	35
Maintenance	36
Disassembly	37
<i>Cell</i>	37
<i>Rotor</i>	38
<i>Cell Top</i>	40
<i>Coupling</i>	41
Remove/Install	42
<i>Angular Contact Bearing</i>	42
<i>Pivot Bushing</i>	43
<i>Rotor Bushing</i>	44
<i>Torsion Assembly</i>	45
Appendix	47
<i>Zeroing the Compass</i>	47
<i>Reinstalling Software</i>	50
<i>Minimum Required Pressures</i>	51
<i>Conversion Charts</i>	52
<i>Test Cell Assembly</i>	53
<i>Test Cell Assembly - Exploded</i>	54
<i>Installing ORCADA®</i>	55
Warranty and Return Policy	56

Intro

When extremely high-temperature and/or high-pressure viscosity measurements are required, the OFITE HTHP viscometer is the solution. This fully-automated system accurately determines the rheological properties of completion fluids and drilling fluids in terms of shear stress, shear rate, time, and temperature at pressures up to 30,000 PSI (207 MPa) and temperatures up to 500°F (260°C). An optional chiller is available for those situations in which the fluid sample needs to be cooled, rather than heated, further increasing the flexibility of the system.

Like OFITE's other computer-controlled viscometers, the HTHP Viscometer features our easy-to-use ORCADA® software. Using this exclusive software, a computer novice can operate the HTHP Viscometer, and yet the system is versatile enough for advanced research and demanding test parameters.

The HTHP Viscometer uses a compass to detect the rotation of a magnet at the top of the torsion assembly. The influence of the powerful drive magnets inside of the shield, the earth's magnetic field, the magnetic properties of the shield, spring non-linearities, magnetic fields and masses in the laboratory, non-ideal fluid flow, and small geometry variations all combine to make the angle display non-linear if not compensated. The microprocessor allows for easy compensation for those effects.

Your HTHP Viscometer has been shipped with everything you need to begin testing. It includes a computer with all necessary software already installed.

Components

Replacement Parts

#120-00-016-1	Pressure TDR, 50,000 PSI (344.8 MPa)
#120-001	Mineral Oil
#120-106	High Pressure Filter
#130-75-71	PC Monitor
#130-75-74	Desktop Computer
#130-76-04	Main Bearing
#130-76-05	Retaining Ring
#130-76-06	Drive Belt
#130-77-002	O-ring for Cell Assembly, 2" Diameter, Teflon, For tests above 400°F
#130-77-022	Rupture Disk, 33,000 PSI (227.5 MPa)
#130-77-080	Torsion Spring Module, F1
#130-77-1	Vee Jewel
#130-77-2	Cell Assembly:
#130-77-31	Cell Cap
#130-77-32	Cell Body
#130-77-33	Test Cell
#130-77-3	O-ring for Cell Assembly, 1.359" Diameter, Nitrile
#130-77-4	O-ring for Cell Assembly, 2" Diameter, Viton
#130-77-5	O-ring for Pressure Ports, 7/32" Diameter, Nitrile
#130-77-6	O-ring for Outside Cell Assembly, 3" Diameter, Viton
#130-77-91	Angular Contact Bearing
#130-77-10	3/16" Stainless Steel Ball
#130-77-11	Shoulder Screw, 10-32 × 0.2495"
#130-77-12	Pivot
#130-77-15	Torque Magnet Assembly
#130-77-20	Rotor Bushing
#130-77-22	Upper Backup Ring
#130-77-23	Lower Backup Ring
#130-77-25	Test Stand Assembly
#130-77-28	Drive Magnet
#130-77-36	Port Adapter
#130-77-38	Rotor
#130-77-39	Bob
#130-77-40	Magnet Holder
#130-77-41	Baffle
#130-77-43	Bob Shaft
#130-77-46	Pivot Cap
#130-79-07	DAQ Cable
#130-79-15	Serial Cable, OB9 M/F
#130-79-42	Transformer, 230 Volt to 115 Volt (For #130-77-230 only)
#132-80	Calibration Fluid, 100 cP, 16 oz, Certified
#152-37	AC Power Cord, 3-Conductor
#171-84-03	Strap Wrench

Optional:

#130-77-SP Spare Parts Kit

- #130-77-002 O-ring for Cell Assembly, Teflon, For tests above 400°F, Qty: 6
- #130-77-080-1 Torsion Spring, F1
- #130-77-1 Vee Jewel, Qty: 6
- #130-77-10 3/16" Stainless Steel Ball, Qty: 2
- #130-77-20 Rotor Bushing, Qty: 6
- #130-77-22 Upper Backup Ring, Qty: 4
- #130-77-23 Lower Backup Ring, Qty: 4
- #130-77-3 O-ring for Cell Assembly, Nitril, Qty: 18
- #130-77-4 O-ring for Cell Assembly, Viton, Qty: 24
- #130-77-5 O-ring for Pressure Ports, Nitril, Qty: 36
- #130-77-6 O-ring for Outside Cell Assembly, Viton, Qty: 12
- #130-77-91 Angular Contact Bearing, Qty: 6
- #132-80 Calibration Fluid, 100 cP, 16 oz

Specifications

Instrument Geometry	True Couette Coaxial Cylinder
Motor Technology	Stepper
Motor Speeds	Variable: .01 – 1,000 RPM
Speed Accuracy	.001 RPM
Shear Rate Range	.01 – 1700 sec ⁻¹
Automatic Tests	API Cementing and Mud Rheologies
Computer Requirements	DB-9 Serial Port, Windows 2000 or XP. Recommended screen resolution 1024 × 768 pixels.

Rotor / Bob Specifications	
Rotor Radius, RR, (cm)	1.8415
Bob Radius, RB, (cm)	1.7245
Bob Height, L, (cm)	3.8
Shear Gap, (cm)	0.117
R Ratio, RB/RR	0.9365
Maximum Shear Stress (Dyne/cm ²)	1,680
Minimum Viscosity @600 RPM ^{<a>} (cP)	0.5 ^{}
Maximum Viscosity @0.01 RPM ^{<c>} (cP)	10,000,000
Shear Rate Constant, KR, (sec ⁻¹ per RPM)	1.7023
<p><a> Lower viscosities can be measured by the HTHP Viscometer, however one must take into account the effect of bearing drag, Taylor vortices, zero offset, etc. when looking at the expected accuracy of the reading</p> <p> For practical purposes the minimum viscosity is limited to 0.5 cP due to Taylor Vortices</p> <p><c> Maximum viscosity is based on Maximum Shear Stress and Minimum shear rate (RPM). However, due to practical and physical limitations, it may be difficult to take these measurements.</p>	



There is considerable thermal lag within the test cell. The temperature sensor sits inside the thermowell in the rotor. The test fluid surrounds the sensor and the heaters surround the test fluid. It can take several minutes for the heat from the heaters to reach the innermost portions of the rotor. Therefore, the temperature reading in the ORCADA® software always lags behind the actual temperature of the test fluid. Because of this, OFITE recommends only changing temperatures in large increments (greater than 50°F or 10°C). Making small adjustments to the test temperature is unlikely to provide useful results.

Setup

Computer

1. Connect the monitor, mouse, and keyboard to the computer and connect the monitor and computer to an AC power outlet. The computer and monitor were shipped with the appropriate power cords.
2. Turn the monitor and computer on.
3. Connect the DB-9 cable to the viscometer and the computer COM port 1. This connection can be found on the right panel of the unit.
4. Connect the 68-pin cable to the viscometer and the computer. On the unit, this connection can be found next to the DB-9 connection. There will be a matching connection on the back panel of the computer.
5. Plug the viscometer unit into an AC power outlet and turn it on.
6. Run the ORCADA® software by double-clicking the ORCADA® icon on the computer desktop.



Note

If this is a fresh install, you will be asked to select a hardware configuration. Select “Model 77” and click “OK”.

7. From the Main Screen, click the “Utilities” menu and then click “Calibrate Shear Stress”. To check if a signal is being transmitted from the unit, simply observe if the value displayed in the “Temperature” field corresponds to room temperature.

Setup

Viscometer



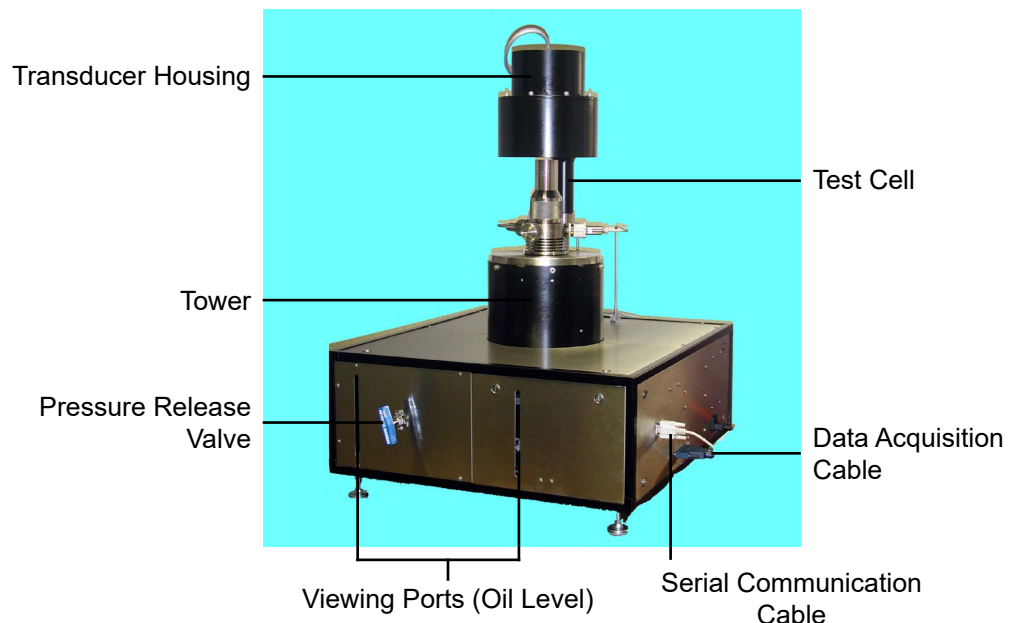
1. Place the unit on a solid, level surface away from any large motors or strong magnetic fields.
2. The HTHP Viscometer is designed to test samples at elevated temperatures and pressures. It requires an air supply of 100 PSI (150 PSI maximum) to drive the pump and a water source (standard tap water) to cool the unit and the test sample. The panel on the left-hand side of the unit has 3 fittings, 1/4" (6.35 mm) NPT, for the air supply, water source, and drain.

The viscometer requires a constant air supply throughout the test.

3. Connect the DB-9 cable to the viscometer and the computer COM port 1. This connection can be found on the right panel of the unit.
4. Connect the 68-pin cable to the viscometer and the computer. On the unit, this connection can be found next to the DB-9 connection. There will be a matching connection on the back panel of the computer.
5. Make sure the viscometer power switch is in the "off" position. Connect the power cord to the unit and an AC power source.
6. Turn the unit on. The power switch is located on the lower right panel. Once the unit is turned on, you will immediately hear both fans operating inside the tower and a beep from the electronics.



Before running a test on the viscometer, you must zero the compass and then run a calibration procedure. For detailed instructions, see page 18 for calibrating the unit and page 47 for zeroing the compass.



Control Panel

During a test, the computer will be continuously adjusting the pressure inside the cell. As the pressure increases due to thermal expansion, the computer will allow pressure to bleed. Likewise, if pressure begins to drop, the computer will add pressure to keep it within the target range.

The **Regulator** on the control panel controls the air pressure into the pump. This should be set between 100 – 150 PSI (690 – 1,034 kPa) as indicated on the **Air Pressure** gauge.

Throttle Valve (Inside) - This valve gives you tighter control over the pressure going into the pump. Use this valve to fine-tune the pressure control system. To access this valve, remove the panel directly to the left of the control panel.

When operating at the lower end of the pressure range (less than 10,000 PSI/68.95 MPa), a single cycle of the pump could add far too much pressure to the cell. If this is the case, the throttle valve should be closed slightly. This will reduce the pressure to the pump, which will reduce the amount of pressure added to the cell in each pump cycle.

When operating at the higher end of the pressure range (above 10,000 PSI / 68.95 MPa), a single cycle may not be enough to add pressure to the cell. In this case, open the regulator slightly to increase the air supply to the pump and increase the pressure added to the cell in each pump cycle.



Operation

1. Remove the entire test cell from the heating well and place it in the preparation stand.
2. Remove the cell and the cell cap from the coupling.
3. Place a small amount of high-temperature thread lubricant (#165-44) on **all** of the threads on the entire cell assembly. This includes the bottom threads for the test cell, the top threads for the cell cap, the threads on the three ports, the threads on the bob and bob shaft, and the threads on the screws holding the torsion spring module to the cell coupling.
4. Place an o-ring (#130-77-4) into the o-ring groove inside the cell, just above the rotor.



Carefully inspect all o-rings before use. Replace any that show signs of damage or wear. O-rings are most likely to be damaged after tests above 400°F (204°C).



Test Cell on
Preparation Stand



O-ring Groove

5. Place the metal cell backup ring (#130-77-23) on top of the o-ring with the flat surface facing up.



The backup ring is designed to prevent o-ring extrusion. Extrusion could cause the seal to fail or complicate the opening of the cell after a test. The backup ring is easily damaged and must be handled carefully to avoid bending it.

6. If the rotor is not already in the cell, carefully lower it in with the magnet end at the bottom.



Tip

The easiest way to hold the rotor is to insert two fingers inside and apply pressure outward. Do not let it drop.



Tip

7. Check the movement of the rotor. To test for resistance, move a magnet or magnetized metal object around the outside of the cell at the same level as the rotor magnet. The rotor should turn freely inside the cell as the outside magnet moves.

If the rotor does not move freely, remove it from the cell. Thoroughly clean the rotor and magnet and inspect the bearing inside the outer race on the rotor (see page 38). Also check the rotor bushing for damage or wear.

8. Pour 140 mL of test fluid into the cell.

Be careful not to get any of the sample on the threads or seals. The fluid level should be about $\frac{3}{16}$ " below the top of the rotor.

9. Check the movement of the rotor again (see step 7 above). This will help the test fluid fill the void space between the cell wall and the rotor.
10. Slide the bob shaft up through the coupling and screw it into bottom of the torsion spring assembly.
11. Slide the cell body under the coupling and screw it into place.

Watch the torque magnet closely as you turn the cell. Just before the cell tightens completely, the torque magnet should lift up about 3 - 5 mm. This is caused by the pivot on the test cell inner race engaging with the jewel bearing on the bob. The pivot will push up on the bob and bob shaft which are connected to the spring assembly.

Once the torque magnet begins to lift, stop tightening the cell. Check the movement of the torsion magnet. It should move up and down slightly. If it does not, the pivot may not have properly engaged with the jewel bearing. Unscrew the test cell and try again.

Once you confirm that the pivot has properly engaged with the jewel bearing, finish tightening the test cell.

If you feel resistance while screwing in the cell, stop immediately and slowly unscrew it. Never force the cell to tighten. Make sure the threads are lubricated with high-temperature thread lubricant (#165-44).



Important



Important



12. Place an o-ring (#130-77-3) into the designated groove on top of the coupling. Place a metal seal ring (#130-77-22) on top of the o-ring. Remember, the flat side of the seal ring should face up.

Carefully inspect all o-rings before use. Replace any that show signs of damage or wear.



13. Tighten the screws on the torsion assembly to secure it to the coupling.
14. Set the pivot cap on the torsion assembly. Make sure the vee jewel sits on top of the pivot.

The magnet should not move from side to side. If it does, carefully tighten the screw on top of the pivot cap until you see the torsion assembly move. As soon as the torsion assembly moves, stop screwing and loosen it a little. You want to tighten the bearing just until it engages with the pivot, no more.

15. Test the movement of the torsion magnet. It should turn freely.

16. Screw the cell cap onto the coupling and tighten it completely.

If you feel resistance while screwing in the cell cap, stop immediately and slowly unscrew it. Never force the cell cap to tighten. Make sure the threads are lubricated with high-temperature thread lubricant (#165-44).



17. Inspect the heating well to make sure nothing has plugged the drain holes around the temperature sensor which projects up in the center.

18. Place an o-ring (#130-77-6) around the outer base of the coupling. This will seal the heating well and prevent steam from escaping during cooling.

19. Remove the cell from the preparation stand and carefully place it into the heating well.



The entire cell assembly is very heavy. Be very careful when removing it from the preparation stand. Use both hands to avoid dropping it.

20. For tests above 200°F (93.3°C), screw the two clamps into the holes on the bulkhead to secure the cell in place.



21. Inspect the o-rings (#130-77-5) on the two pressure port connectors on the test station for damage and replace them if necessary.
22. Line up the inlet and outlet ports with the two pressure lines and tighten the connections.



Note

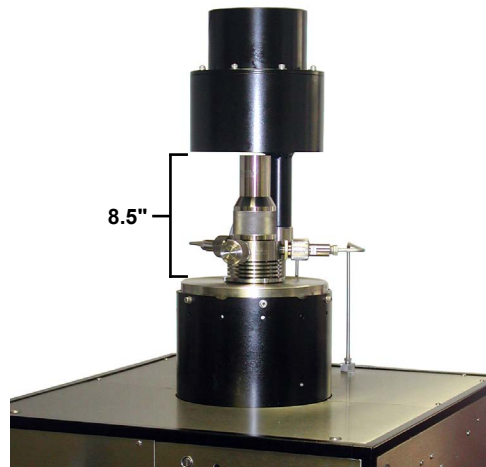
The ports and pressure lines are designed to only line up one way. If they do not fit correctly, rotate the cell within the heating well until they are in position.

23. Tighten the cell locking screw to hold the cell in place during the test.
24. Swing the transducer housing around so that it rests above the test cell.



Note

The distance between the bottom of the transducer housing and the top of the tower should be 8.5" (22 cm). If it is not, adjust the arm of the transducer housing to raise or lower it to the correct position.





Note

25. Fill a syringe with test fluid. Inject 15 mL of the test fluid into the “Front” port.

This step is only necessary when testing drilling fluids to prevent solid particles from damaging the o-rings. If you are preparing the unit for a calibration, you can fill the rotor up to the o-ring instead of injecting addition fluid into the cell.

26. Inspect the o-ring (#130-77-5) on the sample port plug for damage. Replace it if necessary. Screw the sample port plug into place and hand-tighten.
27. Check the “Raw Signal” on the “Calibrate Shear Stress” screen. The value should be 150 to 300. See page 18 for instructions.

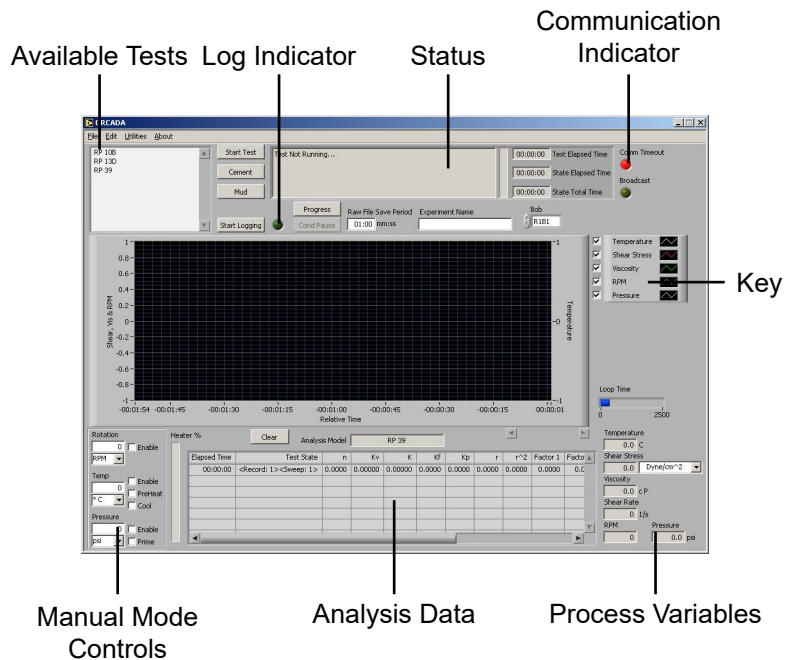
Software Start

1. Double-click the “ORCADADA®” icon on the desktop.
2. If this is a fresh install, you will be asked to select a hardware configuration. Select the appropriate device and click “OK”. You will now see the Main Screen.
3. The Windows XP firewall may try to block the ORCADADA® software from communicating with the viscometer. If the firewall shows the following alert, select “Unblock”.



Windows XP Firewall Alert

Main Screen



“**Start Test**” - This button starts a test in Auto Mode. Once a test is started, this button becomes the “Abort Test” button. Click here to stop the test.

“**Cement**” - This button performs a standard cement test based on API specifications for analysis model RP 10B.

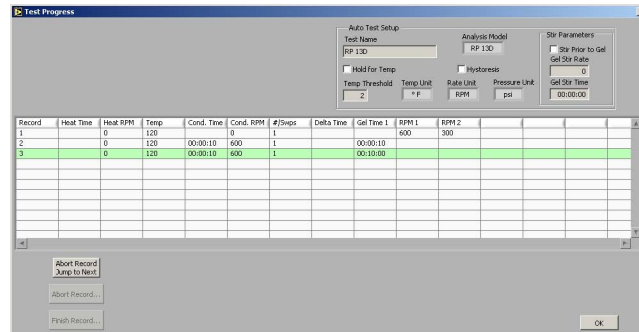
“**Mud**” - This button performs a standard mud test based on API Specifications for analysis model RP 13D.



Note

The “Mud” and “Cement” tests ignore the “Dead Time” and “DAQ Time” settings on the Options screen. Temperature and pressure control, which are disabled during custom Auto-Mode tests, are available during a “Mud” or “Cement” test.

“**Progress**” - This button opens the Test Progress window, which shows all of the steps of the current test and highlights the one currently in process.



“**Status**” - This box at the top of the screen shows the current status of the test.

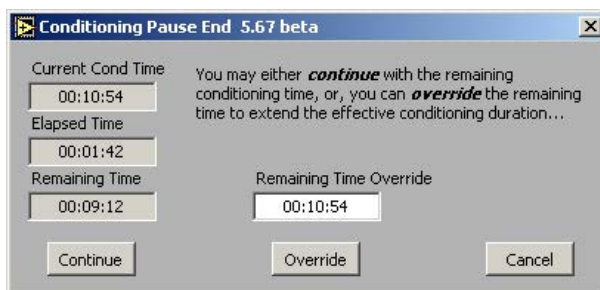
“**Comm Timeout**” - This light will be off when the PC is successfully communicating with the viscometer. If communication is interrupted for any reason, the light will shine red to indicate a problem.

“**Start Logging**” - This button is available in manual mode only. Click here to begin recording test data. The light next to this button will shine green while logging is in progress.

“**Cond Pause**” - This button will pause a test during the conditioning phase and put the software into Manual Mode. While the test is paused, the motor and heat controls can be controlled in the same manner as in a standard Manual Mode test.

To resume the test, click the “Cond Pause” button again. You will be asked if you want to “Continue” the test with the remaining conditioning time or if you want to “Override” the remaining time and extend the effective conditioning time. If you choose to “Continue”, the time remaining in the conditioning cycle will appear as though the test was never paused. If you choose to “Override”, the time remaining in the conditioning cycle will resume at the point where the test was paused.

For example, assume a test has a conditioning time of 10 minutes and the test is paused at the 5 minute mark for 1 minute. If the test is unpaused using the “Continue” option, the time remaining in the conditioning cycle will be 4 minutes. However, if the test is unpaused using the “Override” option, the time remaining in the conditioning cycle will be five minutes, making the effective total conditioning time 11 minutes.



“**Raw File Save Period**” - This field determines how often data is recorded during a test.



Important

“**Experiment Name**” - The entry in this field will be the file name for the saved test data. This field is required before starting a test in Auto Mode or starting logging in Manual Mode. **Do not attempt to change the experiment name during a test.**

“**Bob**” - Select the type of bob currently being used in the unit. An incorrect value in this field will adversely affect your test results. This is the only place where the bob selection can be changed.

“**Key**” - The checkboxes next to the graph key enable and disable graphing of the indicated values. For example, to exclude RPM from the graph, uncheck the “RPM” box. You can also customize the appearance of the lines on the graph by clicking on the line example on the right side of the key.

“**Manual Mode Controls**” - The manual mode controls, in the bottom left-hand corner of the screen, adjust the rotor speed, temperature, and pressure while the unit is operating in manual mode.

“**Rotation**” - This field determines the rotational speed. The drop-down box beneath the field set the units to either RPM or $\frac{1}{s}$.

“**Enable**” - Place a check in this box to engage the motor. Uncheck the box to stop the motor.

“**Temp**” - This field determines the test temperature. The drop-down list beneath the field sets the units to either °F or °C.

“**Enable**” - Place a check in this box to enable temperature control. If the value in the “Temp” field is higher than the sample temperature, the heaters will engage to heat the sample.

“PreHeat” - This field is not used on the HTHP Viscometer.

“Cool” - Place a check in this box to activate the cooling solenoid and begin cooling the sample. The value in the “Temp” field must be lower than the sample for the software to initiate cooling.

“Pressure” - This field determines the test pressure. The drop-down list beneath the field set the units to either PSI or kPa.

“Enable” - Place a check in this box to enable pressure control.

“Prime” - Place a check in this box during initial pressurization. This function allows the cell to be pressurized without being interrupted by the “Low Pressure Limit” (see page 23). During initial pressurization, the pressure will be below the “Low Pressure Limit”. If “Prime” is not checked, the test will be aborted immediately.

“Clear” - This button removes all data from the graph.

“Analysis Model” - This field, below the graph, displays the current Analysis Model being used in the test. This variable is set in the Test Builder (refer to page 27 for more information).

“Analysis Data” - This chart shows the calculated values based on the Analysis Model being used for the test. This data will not display until after the analysis sweep is completed.

“Temperature”, “Shear Stress”, “Viscosity”, “Shear Rate”, “RPM” - These fields display the current value for these variables. They are display only. The drop-down box next to the “Shear Stress” field changes the units of the Shear Stress variable. The units can be set to: Dyne/cm², lb/100ft², Pa., Dial Reading, lb/ft²

Calibration

The HTHP Viscometer is designed to be calibrated with certified calibration fluids available from OFITE. These fluids are Newtonian silicone oils and are available in a number of viscosities. The viscosity tables supplied with the fluids are traceable to the National Institute of Standards (NIST).

The viscometer will retain its calibration as long as the torsion spring Module is not disassembled and is kept clean and corrosion free. Removing the spring Cage Assembly from the top of the Coupling as a unit should have only a minor effect on the mechanical zero.

The ORCADA® calibration program should be run prior to running any test on the unit. It is suggested that a calibration should be performed when:

- The unit has been sitting unused for several weeks.
- The unit has been serviced.
- Periodically go into the “Calibrate Shear Stress” screen and check the “Shear Stress Raw” value. If the calibration signal drifts greater than 50% from original setting, recalibrate.

According to API Recommended Practice 10B-2, viscometers being used for testing well cement should be calibrated quarterly. API Recommended Practice 13B-1 and 13B-2 specify viscometers being used for drilling fluids should be checked monthly.

The calibration fluid should be stored at room temperature and away from direct sunlight. The shelf life of the calibration fluid is 2 years. The calibration fluid used during the calibration program should be checked for suspended solids and clarity prior to being stored. Cloudy calibration fluid should be disposed of properly.

If you intend to re-use the calibration fluid, pour the used fluid into a clean, sealable bottle for storage. This will prevent the used fluid from contaminating the new fluid. Then, for the next calibration, pour the used fluid into the test cell and, if necessary, top off with new fluid. Do not mix used fluid with new.

The ORCADA® software has an automated calibration program that will work with calibration fluids of known viscosity.

1. Turn on the power to the viscometer and let the unit warm up for approximately 15 minutes.
2. Prepare for a test by following the instructions on page 9.
3. From the main screen in the ORCADA® software, choose “Calibrate Shear Stress” from the “Utilities” menu.
4. Notice the “Shear Stress Raw” reading, it should display a value of 150 to 300. If the signal reading does not fall within this range, the unit must be zeroed for calibration.

To zero the unit, loosen the bolts on the transducer housing and rotate the hood slightly while observing the “Shear Stress Raw” value. When the signal is within the acceptable range, tighten the bolts to secure the hood.

5. Select a calibration fluid from the “Cal Fluid Batch” drop-down list. Open the “Fluid Manager” and confirm that the settings match the data sheet that was provided with the fluid.

If the list is empty, click the “Fluid Manager” button to add new fluid batches. Refer to page 22 for more information.

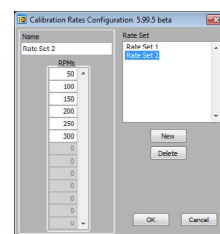
If the “Temp Out of Range” light shines red, the current sample temperature is out of the specified range for the calibration fluid. The sample will have to be heated or cooled to be within the acceptable range before calibration.



Do not attempt a calibration if the sample is not within the appropriate temperature range.

6. Choose a set of calibration rates from the “Rate Set” drop-down list.

To create or edit a rate set, click the “Calibration Rates” button. To create a new set, click the “New” button and enter a name and the rotational speeds. To edit a set, select it in the “Rate Set” list, then change the rotational speeds as necessary.



Rate Sets



Due to mechanical limitations, calibrating at shear rates lower than 10 RPM or higher than 300 RPM is very likely to provide poor results.

7. Click the “Start Calibration” button to begin the calibration.

Once the calibration has started, the software will begin filling in the chart and plotting the results on the graph.

8. As the calibration proceeds, the software will begin to display the collected data in the chart. At the end of the calibration, the software will calculate the “r²” and “r²C” values, which measures the accuracy of the calibration. If “r²C” is less than 0.9990, recalibrate the unit.

If this value is still low, remove the test cell and check the movement of the rotor. The rotor should turn freely. If the unit still does not calibrate, it will require servicing by an OFITE technician.

9. When the calibration is complete, check the r²C value to make sure it is greater than .9990. If it is, click the “OK” button and enter a title for the calibration.

“S.S. Reference” - the shear stress as calculated by the software

“S.S. Raw” - the actual signal coming from the unit

“RPM” - rotational speed

“Viscosity Reference” - the viscosity of the sample as calculated by the software

“Temp” - the temperature of the sample

“S.S. Best Fit” - the line generated by the software to best fit the “S.S. Raw” values

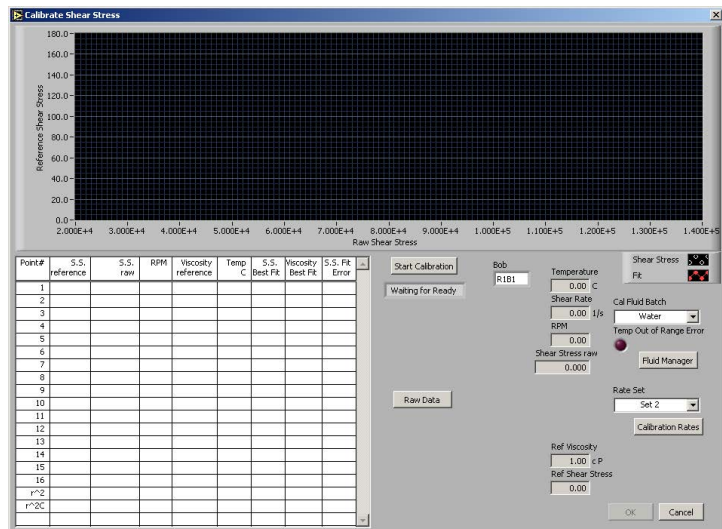
“Viscosity Best Fit” - viscosity value for a perfect calibration

“S.S. Fit Error” - deviation of actual shear stress from “S.S. Best Fit”

“r²” - This is a measure of the accuracy of the calibration. It will be calculated at the end of the calibration cycle.

“r²C” - The r² value only provides useful information when a calibration is performed on a linear scale. For non-linear scales, the r²C shows the corrected r² value and will provide a better measure of the accuracy of the calibration. For linear scales, the r² and r²C values will be the same.

If r²C does not read greater than 0.9990 after multiple calibration tests, the unit will require servicing.



“Temperature” - the temperature of the sample

“Shear Rate” - rotational speed ($\frac{1}{s}$)

“RPM” - rotational speed (RPM)

“Shear Stress Raw” - the actual signal coming from the unit

“Ref Viscosity” - the viscosity of the sample as calculated by the software

“Ref Shear Stress” - the shear stress as calculated by the software

Calibration

Fluid Manager

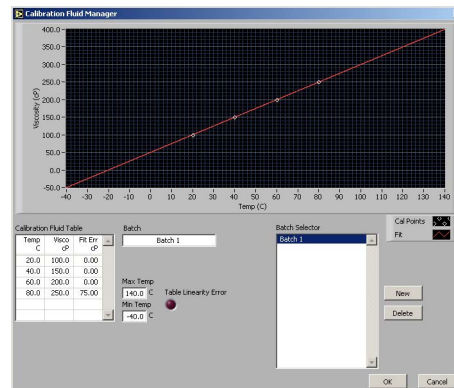
Before calibrating the unit, you must input the specifications of the calibration fluid that you are using. This will give the software the information it needs to perform the calibration accurately.

Click the “Fluid Manager” button on the Calibration screen to add a new calibration fluid batch.

1. Click “New” to add a new batch. You can also edit an existing batch by selecting it in the “Batch Selector” list.
2. In the “Batch” field, type a name for the batch. OFITE recommends using the lot number and viscosity from the Certification Chart that was provided with the fluid.
3. In the “Calibration Fluid Table”, enter at least two Temperature/Viscosity pairs from the Certification Chart. Only two pairs are required.

The “Table Linearity Error” light will shine red if the values in the “Calibration Fluid Table” do not create a straight line. If this occurs, check the values and re-enter them.

4. Once you have entered all the batches, click “OK” to close the Fluid Manager and return to the Calibration screen.



Software

Options

To access the Options screen, choose “Options” from the “Edit” menu.

“Pressure Minimum Deadband” - During testing, the pressure inside the test cell is likely to increase due to thermal expansion. When the pressure rises too high, the software bleeds off the excess. If the pressure drops too low, the software increases the pressure. The software calculates the threshold by adding 3% of the setpoint to the value in the “Minimum Pressure Deadband” field.

For example, assume the pressure setpoint is 10,000 PSI and the “Pressure Minimum Deadband” is set to 100. The threshold in this scenario is 400 ($10,000 \times .03 + 100$). Therefore, if the pressure increases to 10,400 PSI, the software will open the pressure release valve and bleed off the excess. And, if the pressure drops below the setpoint (10,000 PSI), the software will engage the pump to increase the pressure.

“Low Pressure Limit” - This field determines when a test will be aborted due to low pressure. If the pressure drops more than the value in this field, the unit will automatically turn off the pump and the heater to avoid damaging the equipment. The value in this field is relative to the operating pressure.

“One Heater / Two Heaters” - The heater switch adjusts the heater PID controller to change whether the unit is using one or two heaters to set the test temperature. Switching from two heaters to one can be useful at lower temperatures (generally less than 325°F / 163°C) because it provides more control over the temperature range. This function should be used with the “Heaters” switch on the front control panel of the unit.

“Precision Stop Mode” - The HTHP Viscometer measures shear stress by reading the position of the magnets that turn the rotor. When the rotor stops, if the magnets are not centered at their origin position, the shear stress reading in the ORCADA® software will not read 0. The precision stop addresses this by stopping the rotor with the magnets centered in their origin positions. Instead of an immediate stop, the rotor is first slowed so that it can be more accurately stopped at the origin.

“None” - Never perform a precision stop.

“Gel Only” - Only perform a precision stop before a gel test.

“Always” - Perform a precision stop every time the rotor is stopped. This setting is recommended.

“Precision Stop RPM” - This field sets the speed of the rotor during a precision stop. A lower value here will produce more accurate results, but the rotor will take more time to come to a complete stop. A higher number will stop faster, but will provide less accurate results. 3 RPM is recommended.

“Enable Auto Cool” - Check this box to have the viscometer automatically cool the cell after a test.

“Deactivate Cooling when Temp within X°C of Setpoint” - This value tells the software to stop cooling the cell when the temperature is within a certain range.

“Deactivate Cooling when Temp is less than” - This value sets a minimum temperature for cooling.

“Enable Shear Stress Cutoff” - This feature is designed to protect the internal components from excessive shear stress. Check this box to enable the feature.

“Shear Stress Cutoff (%)” - Enter a percentage of the maximum shear stress for the unit. The maximum shear stress is 300 DR. Therefore, a value of 70 in this field will stop the viscometer at 210 DR.

“RPM DAQ Settings” - “RPM High”, “RPM Med” and “RPM Low”, “Dead Time”, “DAQ Time”. These fields are used to determine the amount of time needed for the sample to stabilize at a given rate. The fields are also used to determine the amount of time data is averaged before being saved. For example, if RPM High is set to 60, Dead Time is set to 15 and DAQ Time is set to 20, any rate of 60 RPM or greater during a sweep would stabilize for 15 seconds then begin averaging data for 20 seconds before saving the data.

“Com Port” - This field specifies which Com port the viscometer is connected to.

“DAQmx Device Name” - If multiple DAQ cards are installed on the PC, choose the card you wish the unit to use.

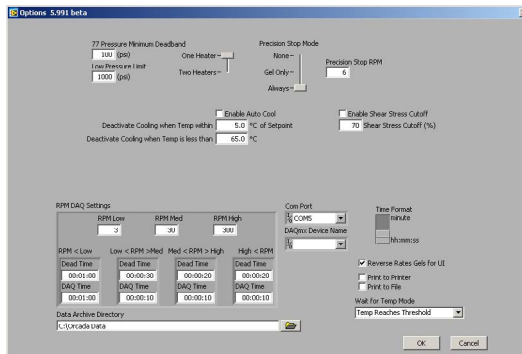
“Reverse Rates Gel UI” - If “Hysteresis” is selected on the “Test Builder” screen (see page 27), this option will perform a gel test after the forward portion of the sweep and after the backward portion.

“Data Archive Directory” - This field specifies the directory to store archived data.

“Wait for Temp Mode” - If a step in the test is set to wait for the temperature setpoint, this option will control how the software determines if the temperature has reached the setpoint.

“Temp Reaches Threshold” - If this option is selected, the software will stop waiting on the setpoint as soon as the temperature is within the threshold. The threshold value is set in the Test Builder.

“Temp is Stable Within Threshold” - If this option is selected, the software will stop waiting on the setpoint only when the temperature has stabilized within the threshold.



Software

Save Rate Settings

By default, the ORCADA® Software saves data to file based on a set time interval. This time interval can be changed by editing the “Raw File Save Period” field on the main screen. However, the “Save Rate Settings” feature provides more control over data save points. The software will monitor each selected variable and record a data point to the file when that variable changes by the amount specified.

1. Select “Save Rate Settings” from the “Edit” menu.
2. Place a check mark next to each variable you wish to monitor.
3. In the field after the variable name, enter the variance required to initiate a save point.

For example, if you want the software to record a data point when the temperature increases or decreases more than 5°, place a check next to “Temperature” and enter 5 in the field next to it.

4. Click “OK” to save the settings and return to the main screen.

“Elapsed Time” - seconds since the start of the test

“RPM” - rotational speed (RPM)

“Shear Rate” - rotational speed ($1/s$)

“RPM SP” - rotational speed setpoint

“Temperature” - measured sample temperature

“Temp SP” - temperature setpoint

“Temp Duty Cycle” - the frequency (in seconds) the heaters engage to increase the temperature

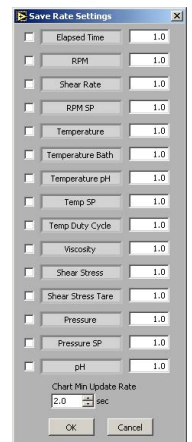
“Viscosity” - measured viscosity (cP)

“Shear Stress” - measured shear stress

“Shear Stress Tare” - change in measured shear stress

“Pressure” - measured pressure

“Pressure SP” - pressure setpoint

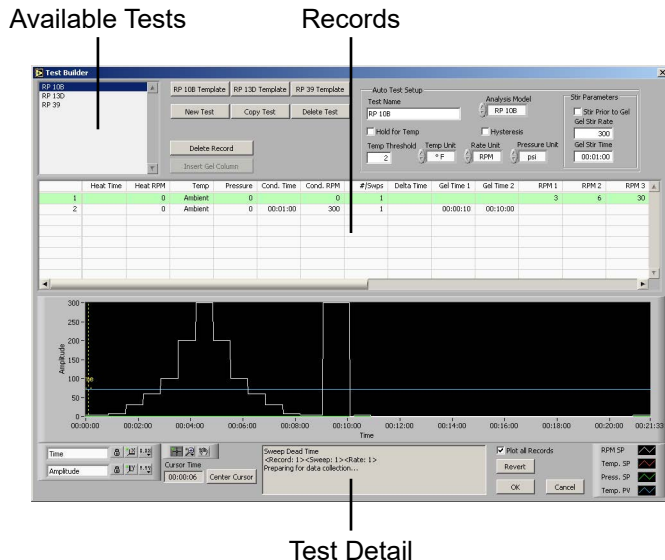


Software

Test Builder

The Test Builder is designed to help you build custom tests for use in **Auto** mode. To access the test builder, go to the Main Screen and choose “Test Builder” from the “Edit” menu.

1. To create a new test, click the “New Test” button. To create a new test based on one of the “RP 10B”, “RP 13D”, or “RP 39” analysis models, click the appropriate button at the top of the screen to open a template. To edit an existing test, select the test from the list in the upper left-hand corner of the screen.
2. Enter a name in the “Test Name” field.
3. Choose an Analysis Model.
 - a. **“RP 39”** - Power Law Model - records the Power Law calculations (n and k)
 - b. **“RP 13D”** - Bingham Plastic Analysis Models - records plastic viscosity (PV) and yield point (YP)
 - c. **“RP 10B”** - Power Law and Bingham Plastic Models combined
4. Input the values for your test into the fields in Record 1.
 - a. **“Heat Time”** - the time it will take the unit to heat the sample to the temperature setpoint. If this field is left blank, the unit will heat the sample as fast as possible.
 - b. **“Heat RPM”** - the rotational speed during the heating period
 - c. **“Temp”** - the temperature setpoint. Enter any letter in this field to indicate “Ambient”.



- d. **“Pressure”** - the pressure setpoint
- e. **“Cond. Time”** - the time period to condition the sample
- f. **“Cond. RPM”** - the rotational speed during conditioning
- g. **“#/Swps”** - the number of sweeps to perform after conditioning. A sweep is a set of rotational speeds separated by time interval. Between sweeps, the rotor returns to the Cond. RPM. At the end of each sweep, the unit calculates the Analysis Model values.
- h. **“Delta Time”** - the time interval between sweeps
- i. **“Gel Time 1”** - During a gel time interval, the rotor comes to a complete stop and waits. At the end of the interval, the rotational speed is increased to 3 RPM until the gel breaks and a gel strength value is recorded. Click the “Insert Gel Column” button to add a gel time to the record.
- j. **“RPM 1, 2, 3, etc.”** - The RPM fields set the speed of each step of the sweep.

5. Repeat step 4 in the following record fields until you have completed building your test.

6. Click the “OK” button to save the test and return to the main screen.

“Hold for Temp” - Click this checkbox to tell the unit to wait until the sample has reached the temperature setpoint before proceeding to the next step. If this box is unchecked, the test will proceed while the sample is heating.

“Temp Threshold” - This field specifies an acceptable variance on the temperature. For example, if the temperature setpoint is 150° and the “Temp Threshold” is set to 5°, the software will consider the setpoint reached when the temperature is between 145° and 155°.

“Temp Unit” - set temperature units to either °F or °C

“Rate Unit” - set the rate units to either RPM or 1/s

“Pressure Unit” - set the pressure units to either PSI or kPa

“Hystoresis” - If this box is checked, each sweep will be performed forward and backwards.

“Stir Parameters” - These parameters only apply if the test includes a gel time.

“Stir Prior to Gel” - Check this box to stir the sample before calculating gel strength.

“Gel Stir Rate” - This is the rate the sample will be stirred prior to calculating gel strength.

“Gel Stir Time” - This is the time interval the sample will be stirred.

“Plot All Records” - If this box is checked, all records will be plotted on the graph. If it is not checked, only the currently highlighted record will be plotted.

The graph below the records provides a visual representation of the current test. Each line represents one aspect of the test: RPM Setpoint, Temperature Setpoint, Pressure Setpoint, and Temperature PV. Refer to the key to the right of the graph for details.

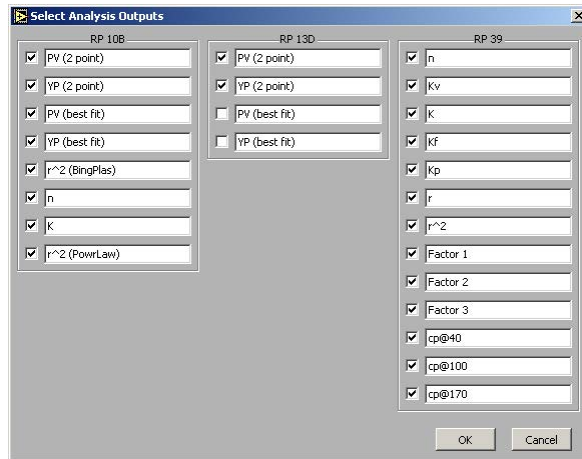
The graph features a cursor, a vertical yellow line, that can be used to view more detailed information about the different phases of the test. The “Center Cursor” button moves the cursor to the center of the graph. Click and drag the cursor across the graph to see more detailed information. Refer to the “Test Detail” field below the graph for more information.

Software

Select Analysis Outputs

After building a test in the Test Builder, the chart at the bottom of the Main Screen will show the various data points being calculated by the viscometer based on the chosen Analysis Model. This chart, however, is customizable. You can choose which data points are displayed on the chart and which are not.

From the “Edit” menu, choose “Select Analysis Outputs”. By default, all data points are selected and will appear on the chart. To remove a data point from the chart, simply uncheck the box next to it.

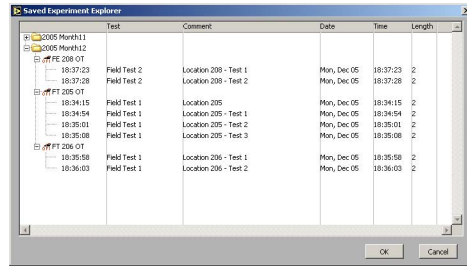


Software

Saved Test Data

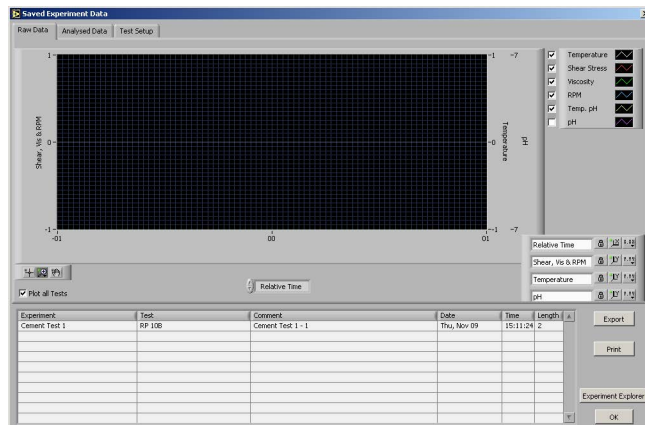
To review test data from past tests:

1. Select “Saved Test Data” from the “File” menu.
2. The saved test data is grouped by month. Select the folder for the year and month of the data you are looking for and click the small + sign next to it. This will show you all of the data for tests run that month, including any comments you added.
3. Select the test you are looking for and click the “OK” button. Multiple tests can be selected by holding down the CTRL key and selecting each test.



Saved Experiment Explorer

4. On the “Raw Data” tab you will see the graph of the test results. The “Analyzed Data” tab shows the results of the calculations based on the Analysis Model. The “Test Setup” tab shows the parameters of the test.



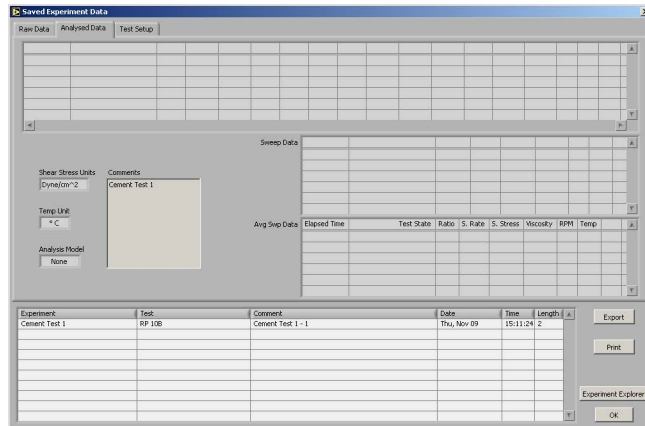
Raw Data

“Export” - Click this button if you wish to export the test data to a file. You will be asked to select a filename and destination and then click “OK”. The resulting file can then be opened in Microsoft® Excel for further analysis.

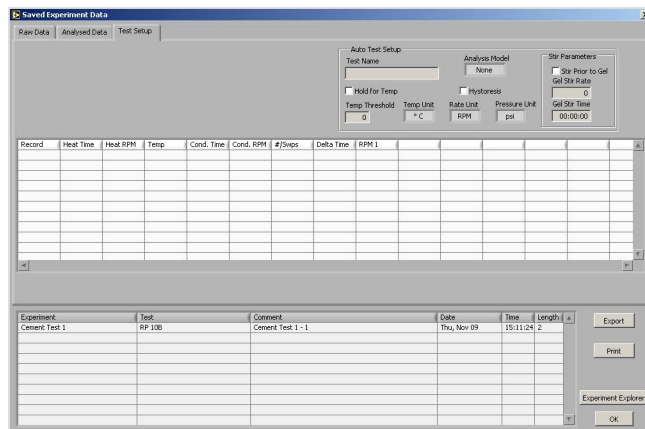
“Print” - Click this button to print the results to the default printer.

“Experiment Explorer” - Click this button to choose another set of test data to review.

“OK” - Click this button to return to the main screen.



Analyzed Data



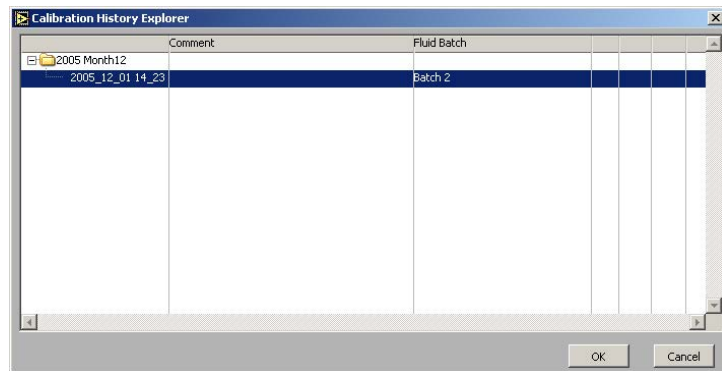
Test Setup

Software

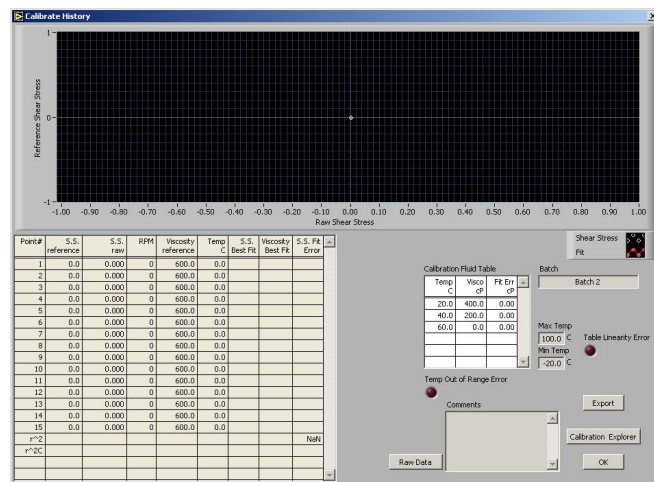
Calibration History

On the Calibration History Screen, you can retrieve the data from all past calibration tests.

1. Begin on the Main Screen. Select “Calibration History” from the “Utilities” menu.
2. The calibration tests are grouped by month. Select the folder for the year and month of the calibration test you are looking for and click the small + sign next to it. This will show you all of the calibration tests run that month, including the fluid batch and any comments you added after the test.
3. Select the test you wish to view and click the “OK” button.
4. You can now see the graph, chart, and fluid batch details.
5. Click the “Export” button if you wish to export the calibration results to a file. You will be asked to select a filename and destination and then click “OK”.
6. When viewing a calibration, you can click the “Make this Cal Active” button to activate the calibration and apply it subsequent test data.



Calibration History Explorer



Calibration History

Software

Import/Export

The Import/Export feature of the ORCAD[®]A Software makes it possible to transfer a test from one PC to another.

1. Begin on the Main Screen. Choose “Export” from the “File” menu.
2. Select the tests you wish to export. Hold down the CTRL key to select multiple tests.
3. Click the “Export” button. You will be asked to choose a destination and filename and then click “OK”.
4. Copy this file to the destination PC.

The file must be placed in the correct folder for it to be available for import. To find this folder, first navigate to the folder specified in the “Data Archive Directory” field in the Options screen (see page 23 for details). From there go to the “ORCAD[®]A” folder and then the “Tests Import Export” folder.

5. On the destination PC, choose “Import” from the “File” menu.
6. Choose the tests you wish to import. Hold down the CTRL key to select multiple tests.

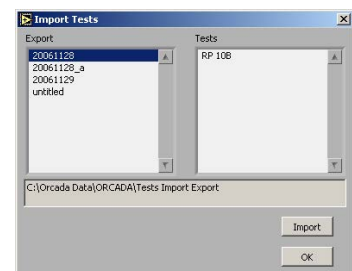
The “Export” field lists all of the files that are available for import. Once you have selected one, the “Tests” field shows which individual tests can be imported from that file.

Below the “Export” and “Tests” fields is a display-only field that shows the folder being scanned for exported tests. Make sure the tests you want to import have been placed in that folder.

7. Click the “Import” button. The new tests will appear in the list in the upper left-hand corner of the Main Screen.



Export



Import

Software

Starting a Test

The ORCAD[®]A software has two modes for running tests: **Auto** and **Manual**. By default, the software is in **Manual** mode when first opened.

To begin a test in **Manual** mode:

1. Enter a value in the “Rotation” field and choose a setting for units (RPM or 1/s).
2. Select the “Enable” checkbox next to the “Rotation” field to start the motor.

Once the motor is started, the display fields on the right-hand side of the screen will begin displaying test data.

3. Enter a temperature in the “Temp” field and choose Celsius or Fahrenheit.

If you are testing at lower temperatures (generally less than 250°F/121°C) it may be more difficult to reach and maintain the desired temperature. If you experience this problem, use the “Heater” switch on the unit control panel to choose only one heater. You will also need to change this setting in the “Options” screen (see page 23 for details).

4. Select the “Enable” checkbox next to the “Temp” field to start the heater.

The “Cool” option activates the cooling solenoid and brings the temperature down to the value specified in the “Temp” field. The “PreHeat” field is not used on this viscometer.

5. Enter a name in the “Experiment Name” field and click the “Start Logging” button.
6. Enter a comment in the resulting dialog box. Comments are optional, but can be used later to identify the test results.

To begin a test in **Auto** mode:

1. Choose a test to run from the list in the upper left-hand corner of the Main Screen.
2. Enter a name in the “Experiment Name” field.
3. Click the “Start Test” button.
4. Enter a comment in the resulting dialog box. Comments are optional, but can be used later to identify the test results.



Note



Note



Note

Maintenance

In order to keep the HTHP Viscometer in good working condition, proper cleaning and maintenance are essential. After each test, immediately remove the test cell and rotor and clean them thoroughly to avoid corrosion and caking.

During high-temperature tests, the test fluid may expand up into the torsion assembly. After each test, inspect the torsion assembly and the bottom jewel bearing for test fluid. Also, check the rotor bearing for any residue. If any is present, clean the parts thoroughly, preferably with a small ultrasonic cleaner.

Select a cleaning solution based on the test fluid.

Disassembly

Cell

Before releasing the pressure in the test cell, make sure it has cooled to 150°F (65.5°C) or less. The cell should be cooled to 100°F (37.8°C) or less before handling to prevent injury.

1. Unscrew the port connectors from the test cell. Leave the sample port plug in place. Some pressurization fluid may leak from the left (inlet pressure) connector.
2. Carefully remove the test cell from the heating well and place it on the preparation stand. Lock it in place with the locking pin.
3. Unscrew the cell and set it below the bob to catch the drips. The strap wrench may be required to break it loose.
4. Remove the backup ring and o-ring.
5. Pour out the contents of the cell and allow it to drain. Be sure to catch the rotor if it falls out.
6. Remove the rotor from the cell and set it down (magnet side up) to drain. Make sure there are no magnetic materials nearby. Disassemble the rotor when it has finished draining. (See page 38)



Important

The drive magnet is highly magnetic and very brittle. Extreme care should be taken to prevent the magnet from being inadvertently attracted to another magnet or to any ferrous object.



Important

The magnet should also be kept away from sensitive mechanical devices such as wrist watches and meters. Magnetic data recording media like computer disks and tapes, and credit cards should also be kept well away.



Important

7. Place all of these components into a sonic bath until clean.

Be sure to keep the magnets separate from the other components to avoid damage.

Disassembly

Rotor

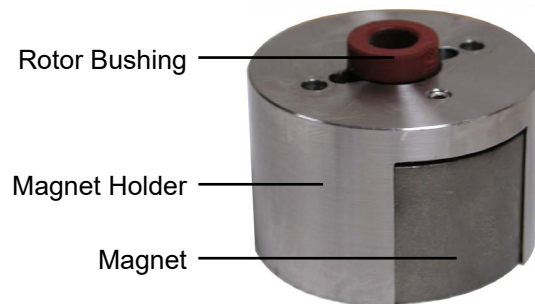
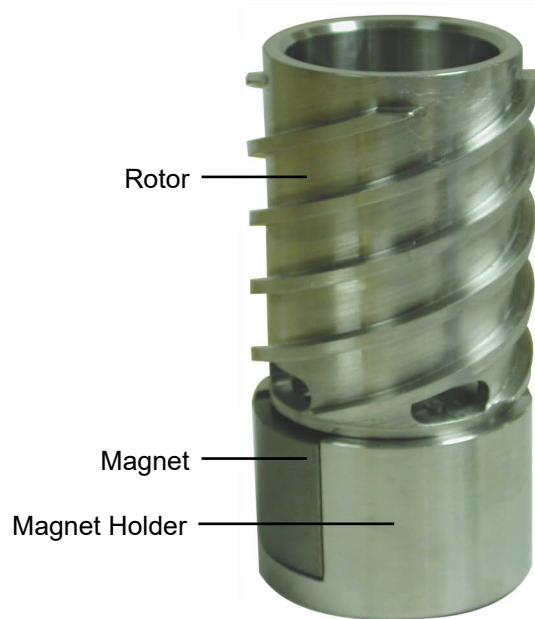


1. Using a flat-head screwdriver, remove the two screws on the bottom of the rotor and remove the magnet holder.
2. Push the rotor bushing out of the bottom of the magnet holder.
3. Remove the magnet and place it on a non-magnetic surface.

Keep magnetic objects away from the magnet.

4. Place all of the parts in a cleaning solution or ultrasonic cleaner and clean them thoroughly. The drive magnet should be cleaned separately.

Be sure to keep the magnet separate from the other components to avoid damage.



5. The rotor should be further disassembled by removing the rotor bearing.
 - a. Using a small punch, press the rotor bearing out of the middle of the rotor.
 - b. Thoroughly clean or replace the rotor bearing.
 - c. Use a brush to clean the small bore of the rotor.

Disassembly

Cell Top



Tip

1. Unscrew the cell cap and remove it. The strap wrench may be required.
2. Lift the pivot cap off of torsion spring module. This will expose the upper torsion magnet.
3. Grasp the bob and unscrew (clockwise) the bob and bob shaft from the torsion assembly at the top. Unscrew the bob from the bob shaft and place them in cleaning solution.

A small stiff brush and a wash bottle filled with a suitable solvent are useful tools when cleaning these parts. Be sure and run a brush through the bob shaft to clean the bore.

4. Remove the two screws that hold the torsion spring module to the coupling.
5. Use the torsion magnet to lift the stainless steel ball from the coupling. Keep the ball on the magnet so that it will not be lost. This ball acts as a check valve to prevent pressurization fluid from returning back to the pump.
6. Place the torsion spring module into the cleaning solution. This module must be cleaned carefully. Make sure that any caked solids in and around the limit stop and the torsion spring are removed. A jet of cleaning solution is useful for this.



Note

The torsion assembly may have to be disassembled in order to completely clean out caked solids on the spring assembly. Remember to calibrate after re-installing the assembly.

Disassembly

Coupling



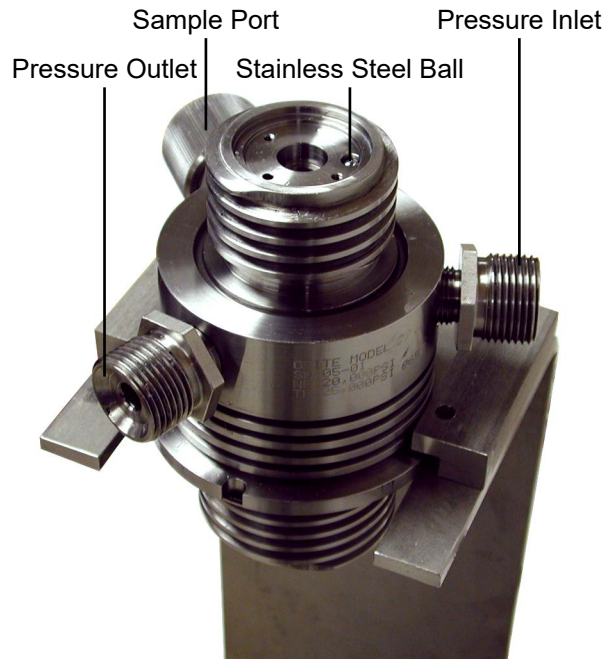
1. Remove the baffle. It may be necessary to put a small screwdriver or allen wrench through the holes in the baffle to loosen it.
2. Remove the sample port plug from the coupling and clean it with a small brush in the cleaning solution. Inspect the o-ring and replace it if it is damaged or worn.
3. Remove the coupling from the stand and clean it thoroughly. Use a brush to clean all holes, crevices, and threads. Set the coupling on its side rather than on its ends.

Be careful not to scratch the top and bottom surfaces of the coupling while cleaning, since they are sealing surfaces.

4. Rinse the coupling and use an air jet to dry it.



Baffle



Remove/Install

Angular Contact Bearing

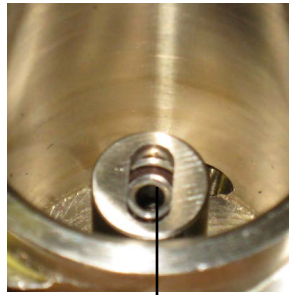


Note

1. Remove the rotor from the test cell.
2. Inspect the thermowell for damage or wear. Replace it if necessary.
3. Try to fit the new bearing onto the thermowell. If the bearing is too tight, use sand paper or emery cloth to sand down the shaft until the bearing goes on and off smoothly.
4. Remove the magnet and magnet holder from the rotor.
5. Using a flathead screwdriver and hammer, tap the pivot bearing until it falls out.
6. With the bearing installer, firmly push the new bearing all the way into the rotor.

The rotor and bearings are designed with a very tight tolerance so that the outer surface of the bearings can grip the walls of the rotor while still being inserted and removed easily. It is common for the bearing to slip while inside the rotor. This will not affect data quality, but it could make cell assembly and disassembly more difficult if the bearing slips out of the rotor. To prevent this, you can either replace the bearing or sand down the outer edge to create a rough surface. Then use alcohol to remove any metal shavings.

7. Reassemble the rotor.



Pivot Bearing



Bearing Installer



Bearing

Pivot Thermowell

Remove/Install

Pivot Bushing

Removal:

Once the angular contact bearing inner race is removed, the pivot bushing can also be removed with the puller and the slide hammer.

1. Screw the puller onto the threaded end of the slide hammer.
2. Remove the two inner race adapters from the ends of the arms, if they are installed.
3. The circular slot in the fittings at the end of the arms is designed to engage the flange at the bottom of the bushing. Separate the arms of the puller a little and lower them to the bottom of the cell, around the pivot/thermowell.
4. Close the arms of the puller, engaging the slots on the bushing flange on each side.
5. Hold the arms closed with one hand and slide the weight of the slide hammer up with the other, banging it against the stop away from the cell. After a few moderate blows, the bushing should break loose.

Installation:

1. Drive the pivot bushing into position by striking the stop closest to the cell with the slide hammer weight.

Do not use any locking compound when installing the bushing.

2. Make sure it is driven all the way down. Check this by putting the rotor in the cell and confirming that the ball bearing is supporting it, and not the bushing at the bottom. If it is not all the way down, the uplifted rotor will push against the bob when the test cell is assembled, preventing proper rotation of the bob.



Remove/Install

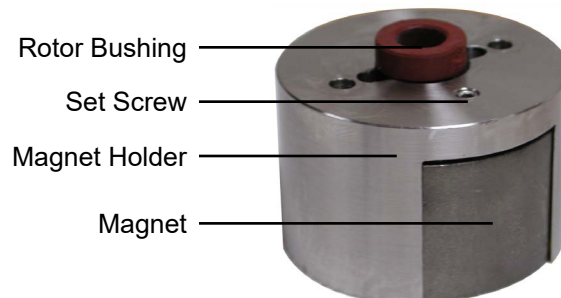
Rotor Bushing

Removal:

Refer to page 38 for instructions.

Installation:

1. Set the rotor cup down with the open end down.
2. Set the magnet holder on the rotor with the slotted end down.
3. Rotate the magnet holder until the two screw holes line up with the corresponding holes in the rotor.
4. Apply a small amount of high-temperature thread lubricant to the end of the two screws before screwing them in place.
5. Slide the drive magnet into the slot until it is roughly centered.
6. Inspect the rotor bushing for damage or wear. Replace it if necessary.
7. Push the rotor bushing into the hole in the magnet holder and into the drive magnet until it stops. This helps to temporarily retain the magnet.
8. Visually center the drive magnet so that it does not protrude more on one side than the other and tighten the set screw in the magnet holder. This will lock the drive magnet into position.



Remove/Install

Torsion Assembly



Removal:

1. Slide the pivot cap off of the torsion assembly.
2. Unscrew the two screws that secure the torsion assembly to the coupling and remove the assembly from the coupling.
3. Loosen the set screw on the torsion magnet and remove the magnet from the spring assembly.
4. Loosen the set screw on the zeroing sleeve and slowly pull the spring assembly down and out of the spring housing.

Do not stretch the torsion spring.

5. Loosen the set screw on the spring cage and remove the zeroing sleeve.
6. Place all of these components into a sonic bath until clean.



Torsion Assembly

Installation:

1. Slide the zeroing sleeve into the spring housing and tighten the set screw to secure it in place.
2. Slide the spring assembly up through the spring housing and secure it in place by tightening the set screw on the zeroing sleeve.
3. Slide the torsion magnet over the pivot and onto the spring assembly and secure it in place by tightening the set screw.
4. Look for the groove on the bottom of the spring housing. Line up this groove with the stainless steel ball on the coupling. Set the torsion assembly on top of the coupling.
5. Secure the torsion assembly with the two screws.

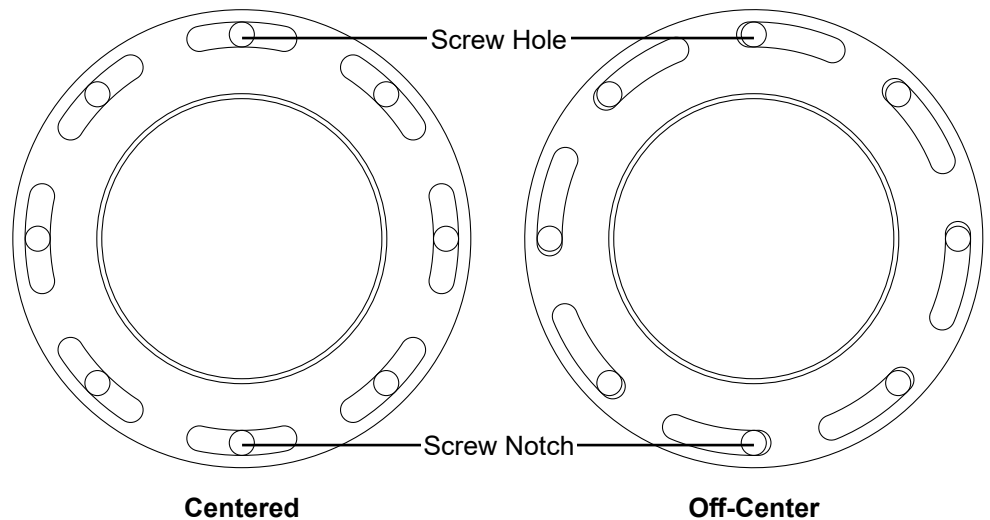
Appendix

Zeroing the Compass

The compass, inside the transducer housing, tracks the movement of the spring assembly by measuring the magnetic field of the upper magnet. The natural magnetic field of the Earth will interfere with this process unless the orientation of the compass is established and recorded.

You must zero the compass any time the HTHP Viscometer is moved.

1. Load the test cell and position it as you would for a test. See page 9 for instructions.
2. Remove the eight locking screws from the transducer housing.
3. Position the transducer housing so that the screw hole in the base is aligned in the center of the screw notch in the cap. This will give you the most room for adjustment.



4. Remove the cell cap and pivot cap to expose the magnet on the torsion assembly.
5. Loosen the set screw on the torsion spring magnet.
6. Open the ORCADA® software and select “Calibrate Shear Stress” from the “Utilities” menu.
7. Observe the value in the “Shear Stress Raw” field. Turn the torsion magnet until this value is 0.

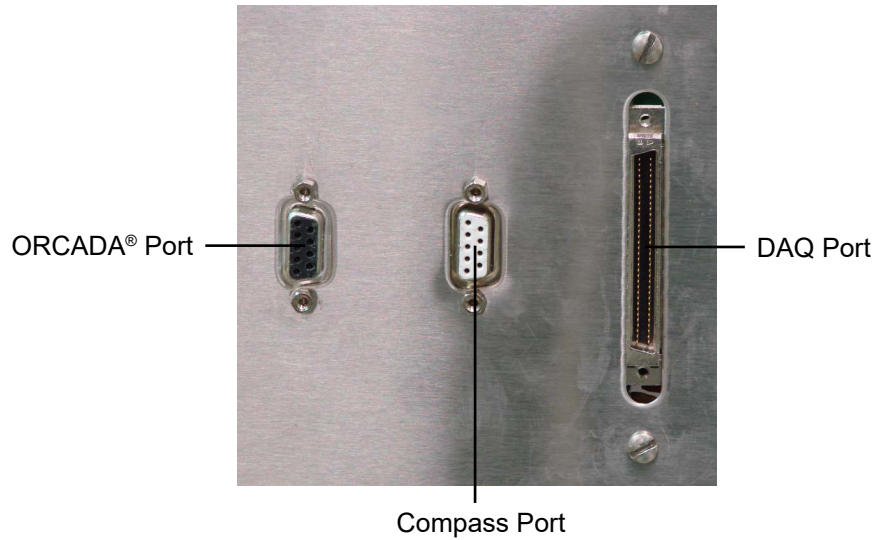


Tip

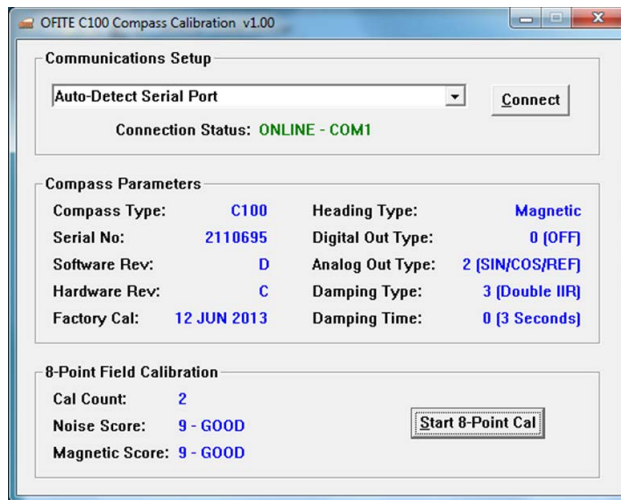
The sensor in the compass is very sensitive. Turn the magnet very slightly and then wait for the signal to stabilize before continuing. If you turn the magnet past zero, the display will show 8000. Simply turn the magnet back the other way until the value is back on target.

8. Tighten the set screw to lock the torsion magnet in place.

9. Place the pivot cap back onto the torsion assembly and place the cell cap back onto the test cell.
10. Unplug the serial cable from the ORCADA® port and plug it into the compass port.



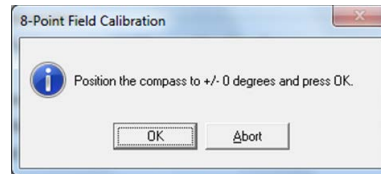
11. On the PC, open the C100 software.
12. Select “Auto-Detect Serial Port” and click “Connect”.



13. Click “Start 8-Point Cal”.

14. Follow the on-screen instructions.

The software will prompt you to turn the cap 45° and then click OK. After doing this eight times, the software will display a calibration score. If any errors occurred, follow the on-screen instructions to correct them.



15. Once the calibration is complete, close the software.

16. Return the cap to the zero position and lock it in place by tightening the locking screws.

17. Be sure to switch the serial cable from the compass port back to the ORCADA® port.

Appendix

Reinstalling Software

Reinstallation of the ORCADA® and data acquisition software packages will only be necessary in the case of computer replacement or catastrophic failure in the current computer system.

NI-DAQ Software:

1. Physically remove the DAQ card from the computer's PCI slot.
2. Turn on the computer and place the NI-DAQ CD in the drive and wait for it to start up. When ready, install the NI-DAQ software. If the software asks you for the "device" being installed, it is "PCI 6024E".
3. When the install program stops and asks you if you want to reboot the machine, or shut down manually, choose to shut down manually. Do not remove the CD.
4. Shut down the computer, and reinstall the DAQ card.
5. Start up the machine again, and you should see the computer find the card and load drivers for it. The install package will start up again and finish the install.
6. When the installation is complete, confirm that the software is installed properly and that the card is working:
 - a. Start up the DAQ program called "Measurement and Automation".
 - b. Under the "Configuration" window, you will see a tree structure. Under "My System", open the "Devices and Interfaces" node and then select "NI-DAQmx Devices".
 - c. You should see a device listed as DAQ-6024E (Dev1). Right-click on this and select "Self Test". This should respond that the device has passed the test.



If the self test fails, right-click the device again and select "Restart Device". Run the self test again. If the self test fails again, return to step 1 and try a different PCI slot in the computer. If the device still does not work, the system will need to be replaced.

ORCADA® Software:

1. Place OFITE CD or startup floppy into appropriate drive.
2. Double click on "Setup.exe". (The program is self-installing).
3. Follow the instructions to install the program.
4. Once complete, copy the icon to the desktop if desired.

Appendix

Minimum Required Pressures

Temperature		Pressure	
°F	°C	PSI	kPa
Ambient – 200	Ambient – 93.3	0	0
201 – 295	93.9 – 146.1	100	690
296 – 355	146.7 – 179.6	200	1,380
356 – 395	180.1 – 201.8	300	2,070
396 – 445	202.4 – 229.6	500	3,450
446 – 500	230.2 – 260.2	800	5,520

Appendix

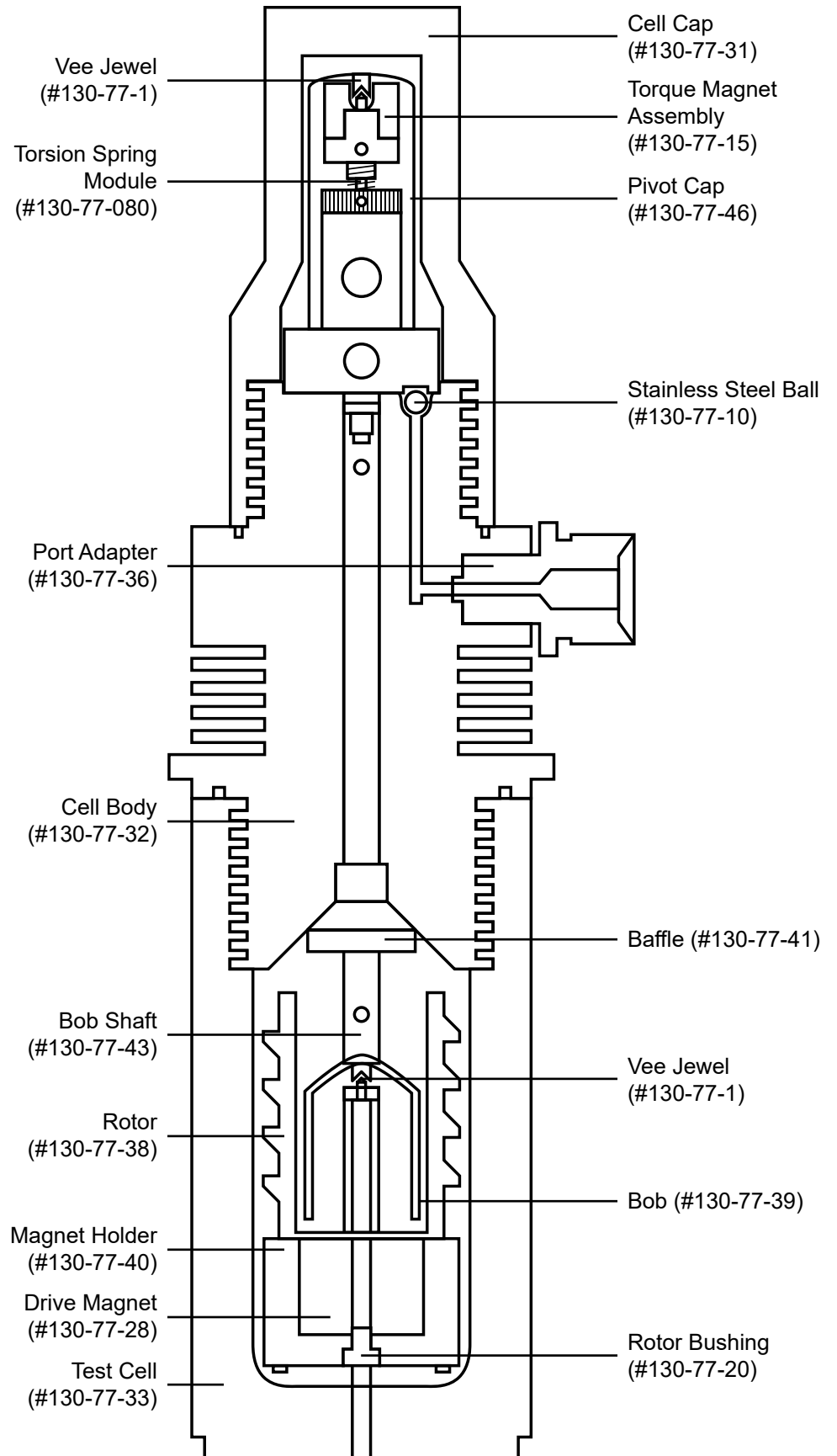
Conversion Charts

Viscosity Conversions						
To convert from units on left side to units on top, multiply by factor @ intercept.						
From \ To	Centipoise (cP)	Poise (P)	g/(cm × s)	(mN × s)m ²	mPa × s	$\frac{(\text{lb} \times \text{s})}{100 \text{ ft}^2}$
Centipoise	1	0.01	0.01	1	1	0.002088
Poise	100	1	1	100	100	0.2088
g/(cm × s)	100	1	1	100	100	0.2088
(mN × s)m ²	1	0.01	0.01	1	1	0.002088
mPa × s	1	0.01	0.01	1	1	0.002088
$\frac{\text{lb} \times \text{s}}{100 \text{ ft}^2}$	478.93	4.789	4.789	478.93	478.93	1

Rotation Conversion	
RPM	sec ⁻¹ or 1/s
1	1.70
2	3.40
3	5.11
6	10.21
10	17.02
20	34.05
30	51.07
60	102.14
100	170.23
200	340.46
300	510.69
600	1,021.38
1,000	1,702.30

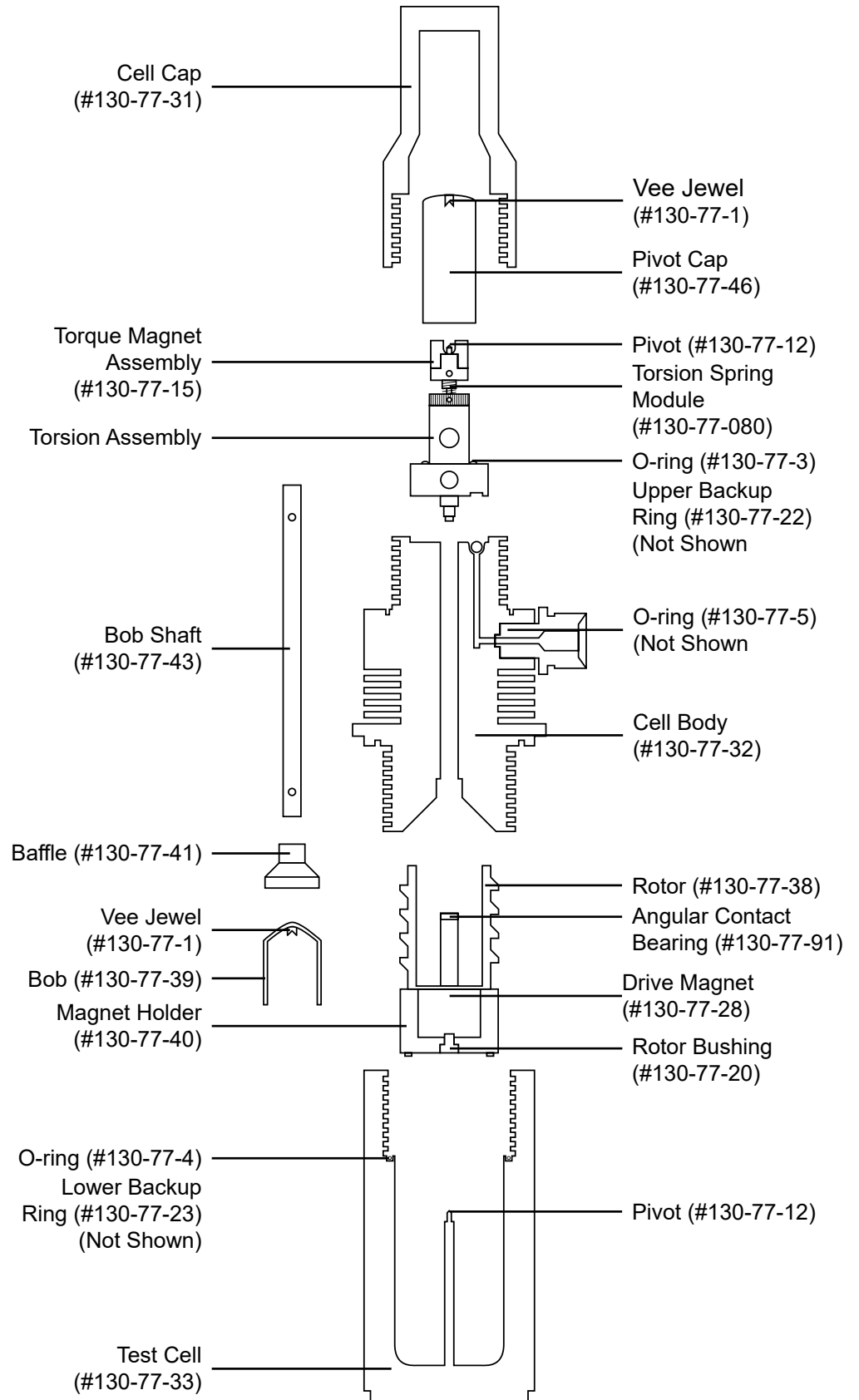
Appendix

Test Cell Assembly



Appendix

Test Cell Assembly - Exploded



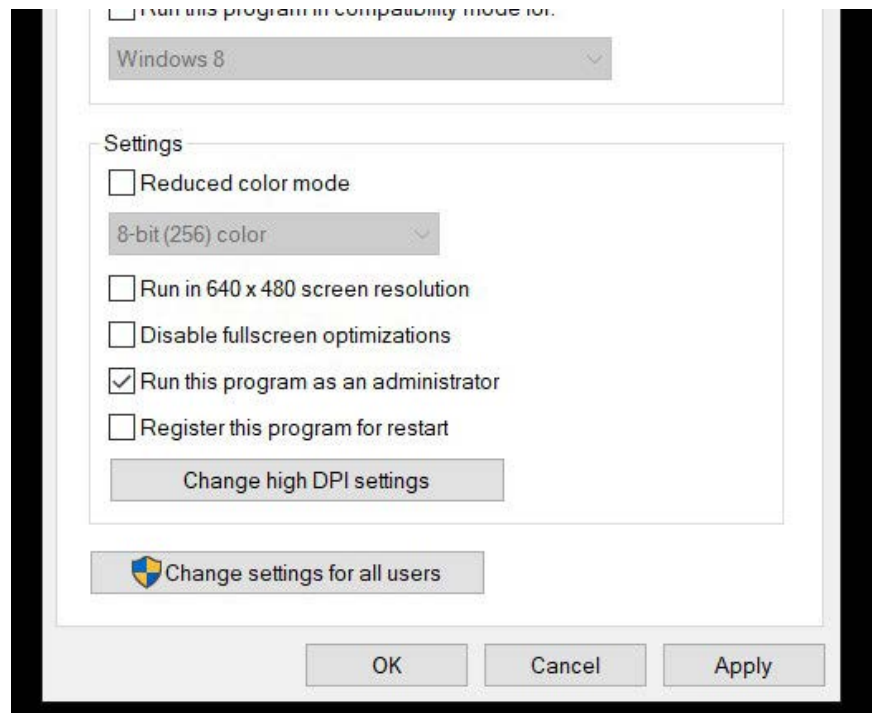
Appendix

Installing ORCAD[®]

When installing ORCAD[®] on a new computer, it is important to install it in the root folder of the C: drive. Do not install it in the “Program Files” or “Program Files (x86)” folders.

After installing the software, you will need to tell the computer to run the software as an administrator.

1. Right-click the ORCAD[®] icon and select Properties.
2. Select the “Compatibility” tab.
3. Place a checkmark in the box next to “Run this program as an administrator”.
4. Click OK.



Warranty and Return Policy

Warranty:

OFI Testing Equipment, Inc. (OFITE) warrants that the products shall be free from liens and defects in title, and shall conform in all respects to the terms of the sales order and the specifications applicable to the products. All products shall be furnished subject to OFITE's standard manufacturing variations and practices. Unless the warranty period is otherwise extended in writing, the following warranty shall apply: if, at any time prior to twelve (12) months from the date of invoice, the products, or any part thereof, do not conform to these warranties or to the specifications applicable thereto, and OFITE is so notified in writing upon discovery, OFITE shall promptly repair or replace the defective products. Notwithstanding the foregoing, OFITE's warranty obligations shall not extend to any use by the buyer of the products in conditions more severe than OFITE's recommendations, nor to any defects which were visually observable by the buyer but which are not promptly brought to OFITE's attention.

In the event that the buyer has purchased installation and commissioning services on applicable products, the above warranty shall extend for an additional period of twelve (12) months from the date of the original warranty expiration for such products.

In the event that OFITE is requested to provide customized research and development for the buyer, OFITE shall use its best efforts but makes no guarantees to the buyer that any products will be provided.

OFITE makes no other warranties or guarantees to the buyer, either express or implied, and the warranties provided in this clause shall be exclusive of any other warranties including ANY IMPLIED OR STATUTORY WARRANTIES OF FITNESS FOR PURPOSE, MERCHANTABILITY, AND OTHER STATUTORY REMEDIES WHICH ARE WAIVED.

This limited warranty does not cover any losses or damages that occur as a result of:

- Improper installation or maintenance of the products
- Misuse
- Neglect
- Adjustment by non-authorized sources
- Improper environment
- Excessive or inadequate heating or air conditioning or electrical power failures, surges, or other irregularities
- Equipment, products, or material not manufactured by OFITE
- Firmware or hardware that have been modified or altered by a third party
- Consumable parts (bearings, accessories, etc.)

Returns and Repairs:

Items being returned must be carefully packaged to prevent damage in shipment and insured against possible damage or loss. OFITE will not be responsible for equipment damaged due to insufficient packaging.

Any non-defective items returned to OFITE within ninety (90) days of invoice are subject to a 15% restocking fee. Items returned must be received by OFITE in original condition for it to be accepted. Reagents and special order items will not be accepted for return or refund.

OFITE employs experienced personnel to service and repair equipment manufactured by us, as well as other companies. To help expedite the repair process, please include a repair form with all equipment sent to OFITE for repair. Be sure to include your name, company name, phone number, email address, detailed description of work to be done, purchase order number, and a shipping address for returning the equipment. All repairs performed as "repair as needed" are subject to the ninety (90) day limited warranty. All "Certified Repairs" are subject to the twelve (12) month limited warranty.

Returns and potential warranty repairs require a Return Material Authorization (RMA) number. An RMA form is available from your sales or service representative.

Please ship all equipment (with the RMA number for returns or warranty repairs) to the following address:

OFI Testing Equipment, Inc.
Attn: Repair Department
11302 Steeplecrest Dr.
Houston, TX 77065
USA

OFITE also offers competitive service contracts for repairing and/or maintaining your lab equipment, including equipment from other manufacturers. For more information about our technical support and repair services, please contact techservice@ofite.com.